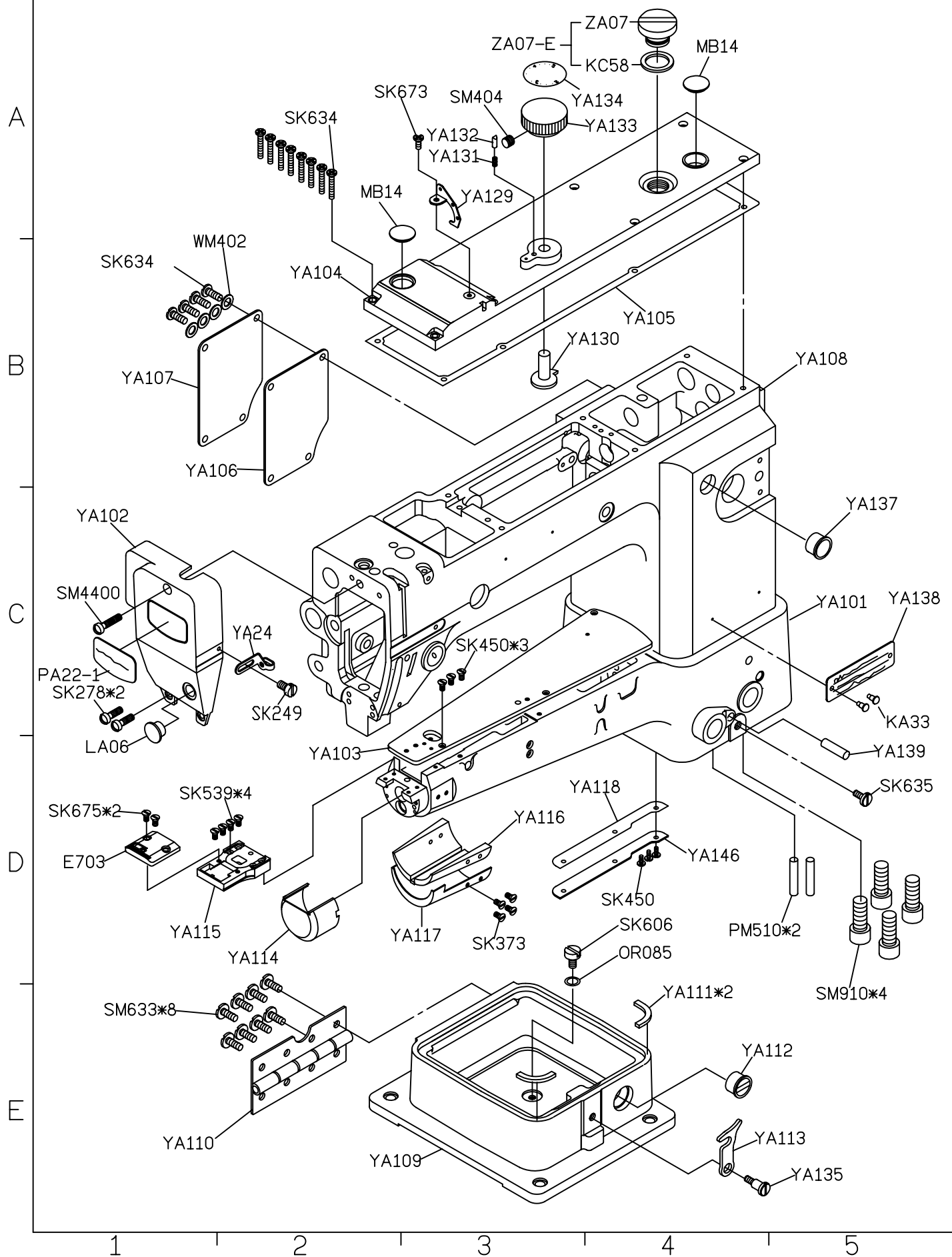


PARTS LIST FOR YA GROUP 系列圖 1/14



PARTS LIST

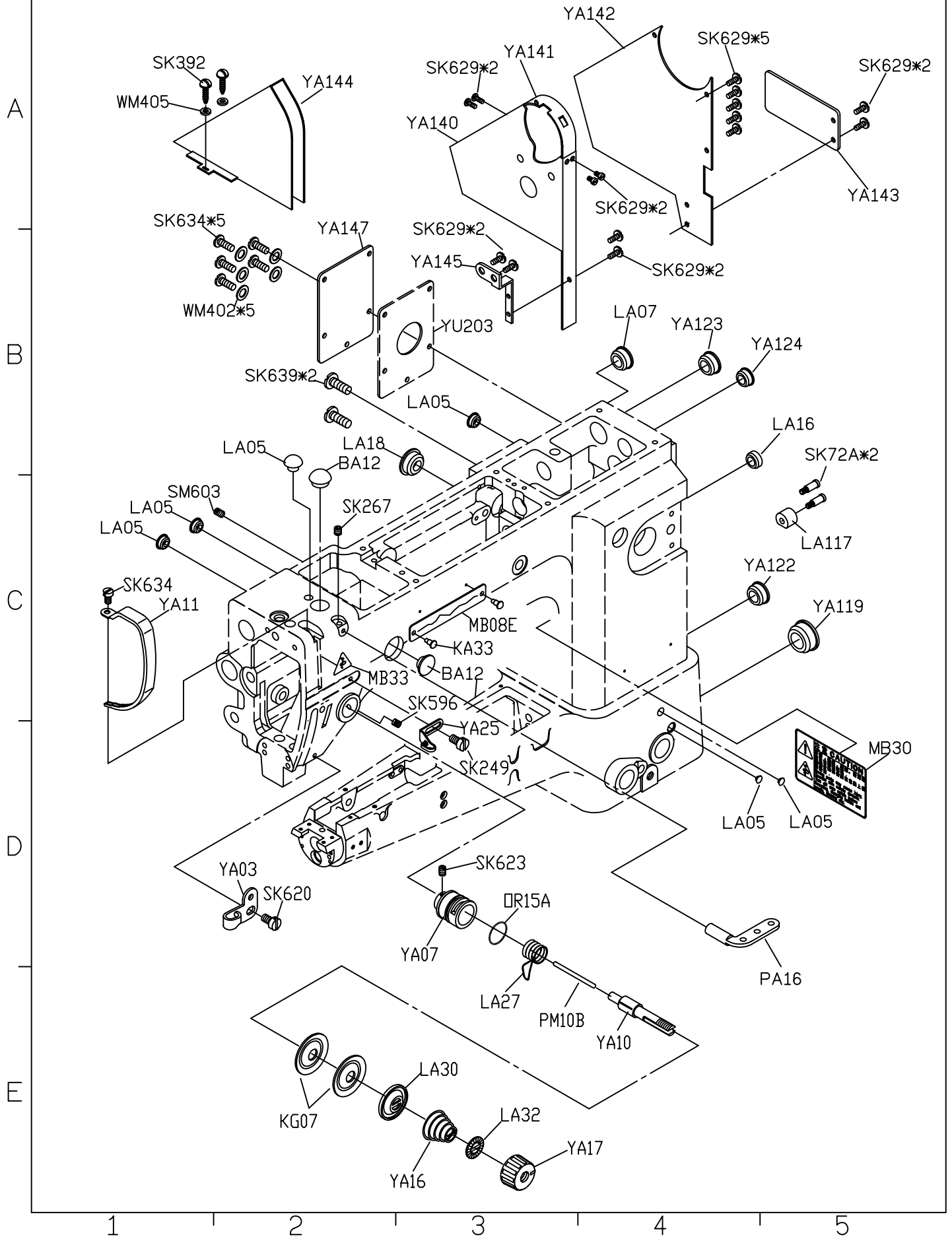
FOR

YA

GROUP

系列圖

2/14



PARTS LIST

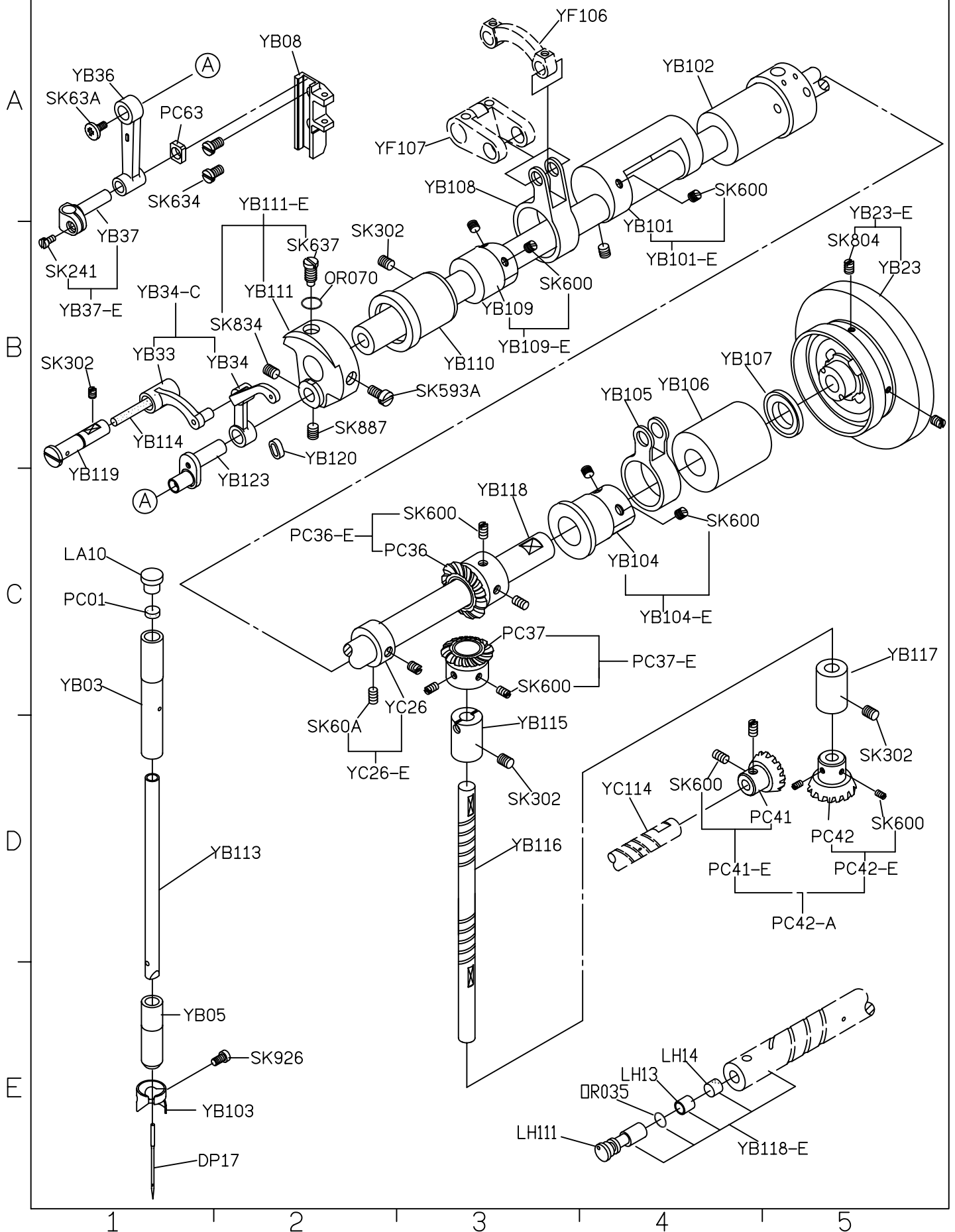
FOR

YB

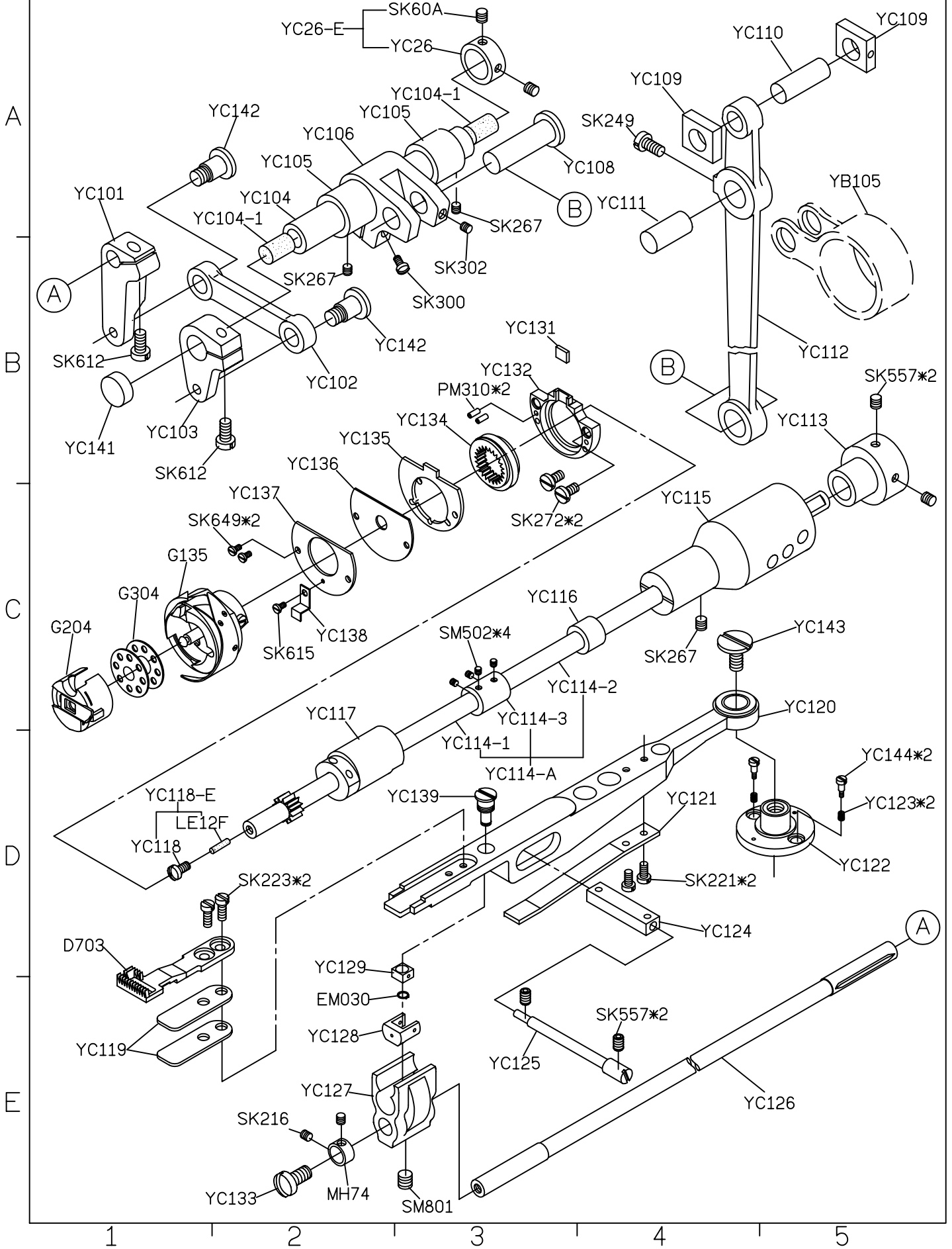
GROUP

系列圖

3/14



PARTS LIST FOR YC GROUP 系列圖 4/14



PARTS LIST

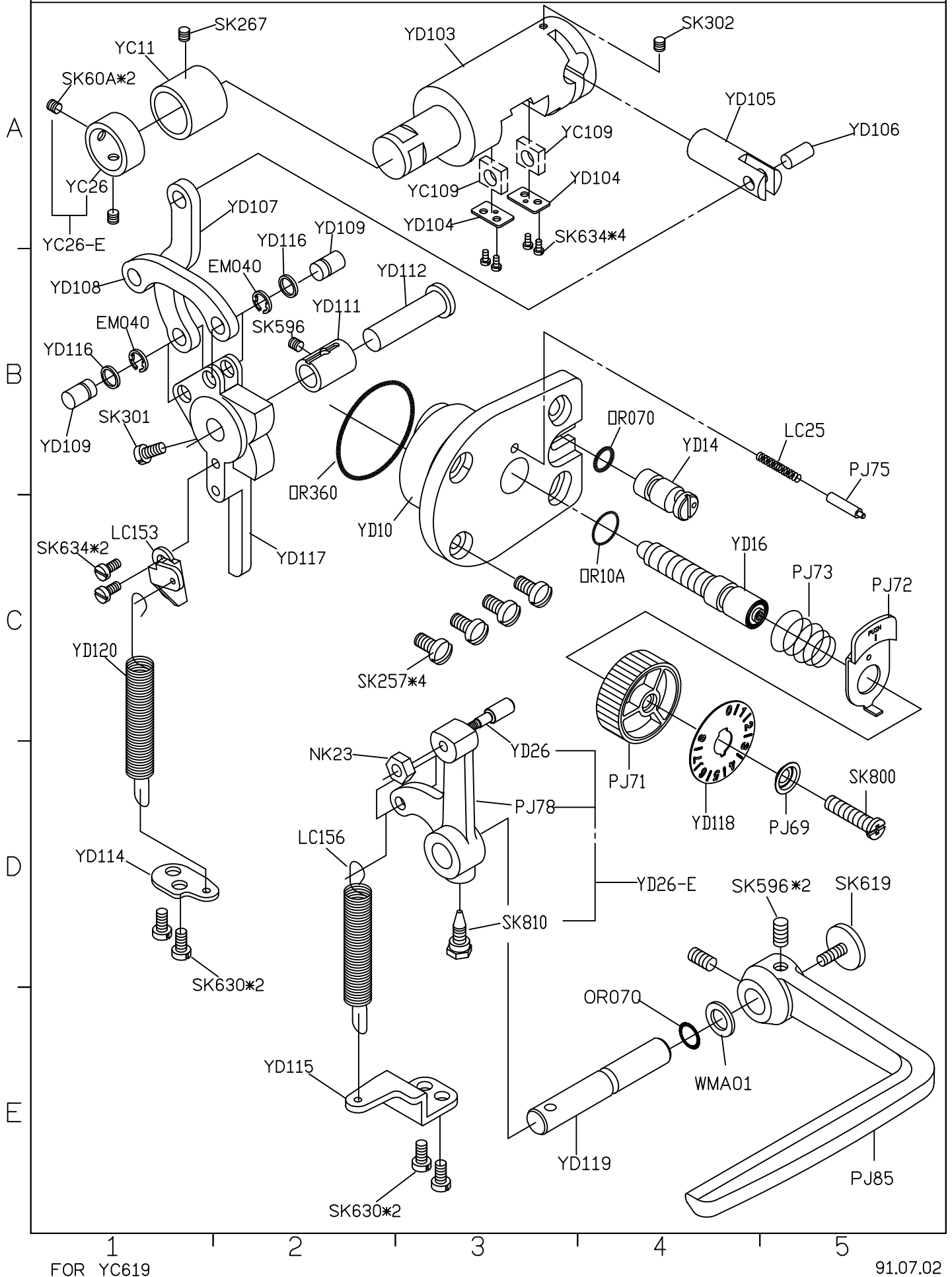
FOR

YD

GROUP

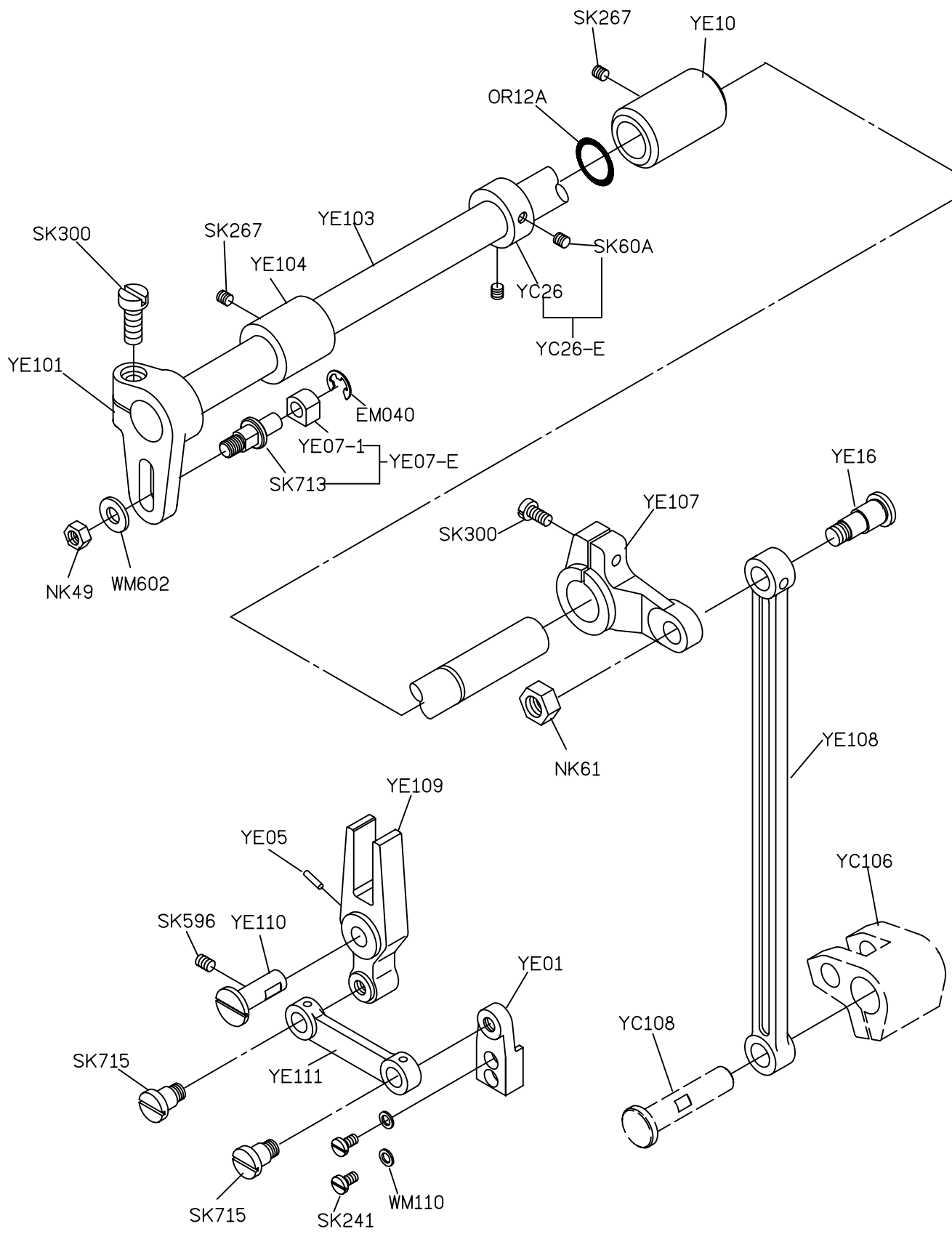
系列圖

5/14



PARTS LIST FOR YE GROUP 系列圖 6/14

A
B
C
D
E



PARTS LIST

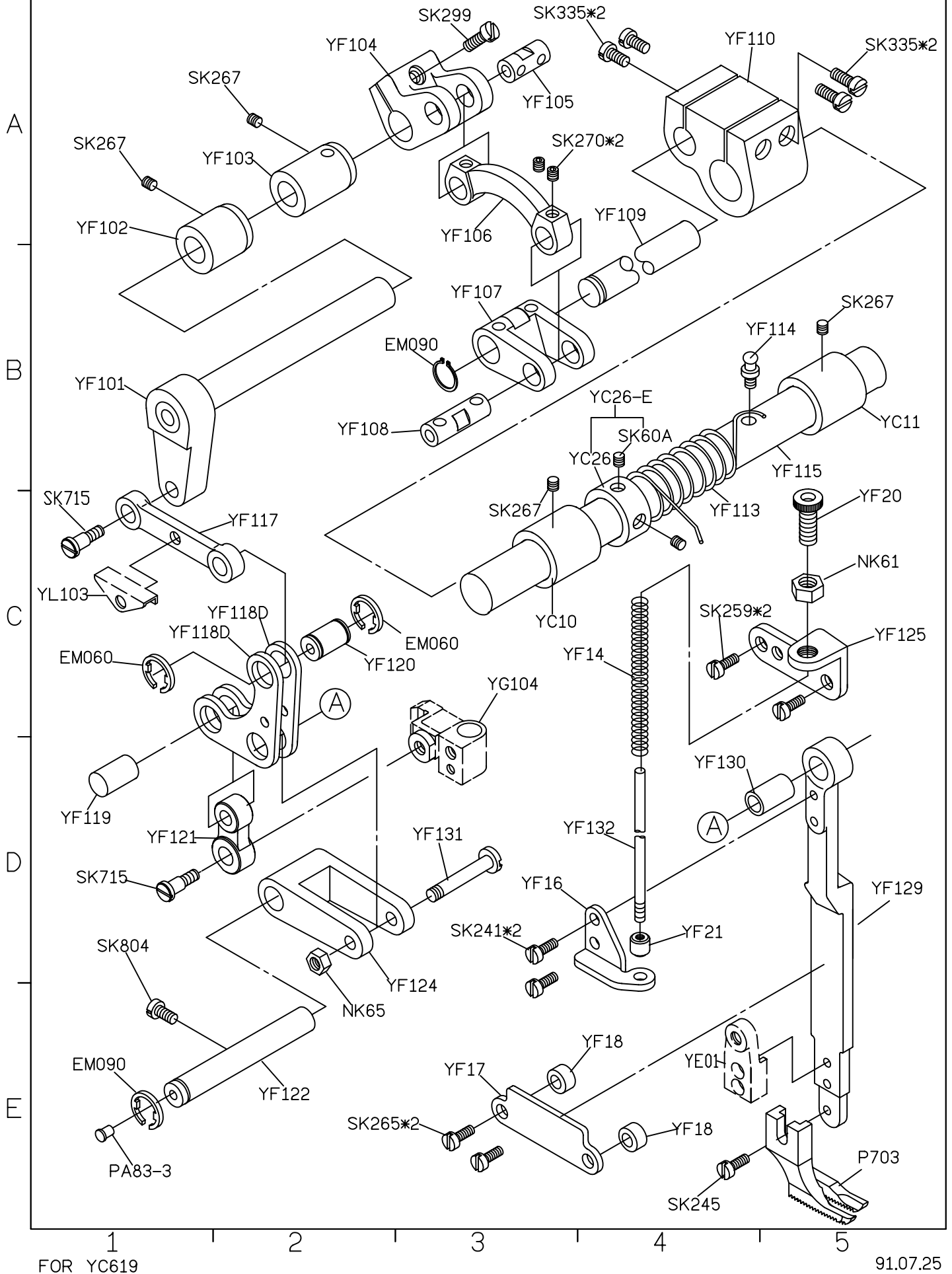
FOR

YF

GROUP

系列圖

7/14





PARTS LIST FOR YJ GROUP 系列圖 9/14

A

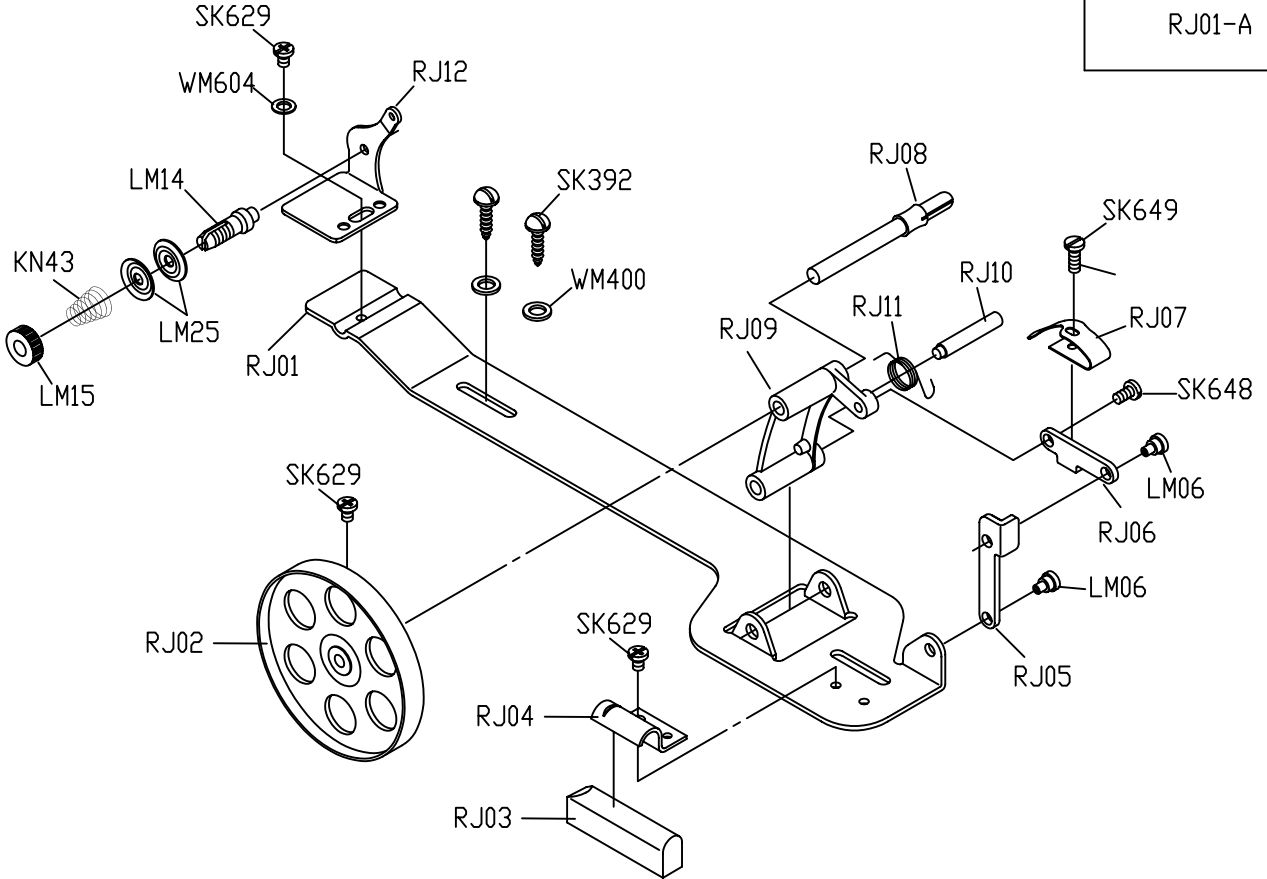
B

C

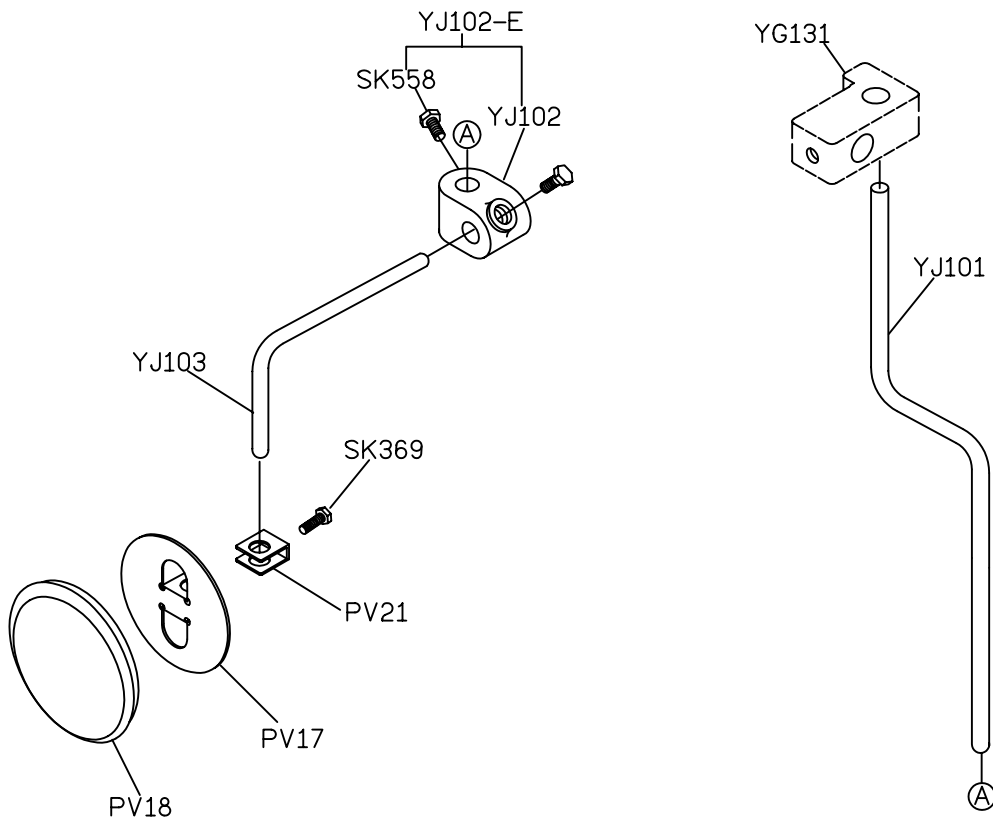
D

E

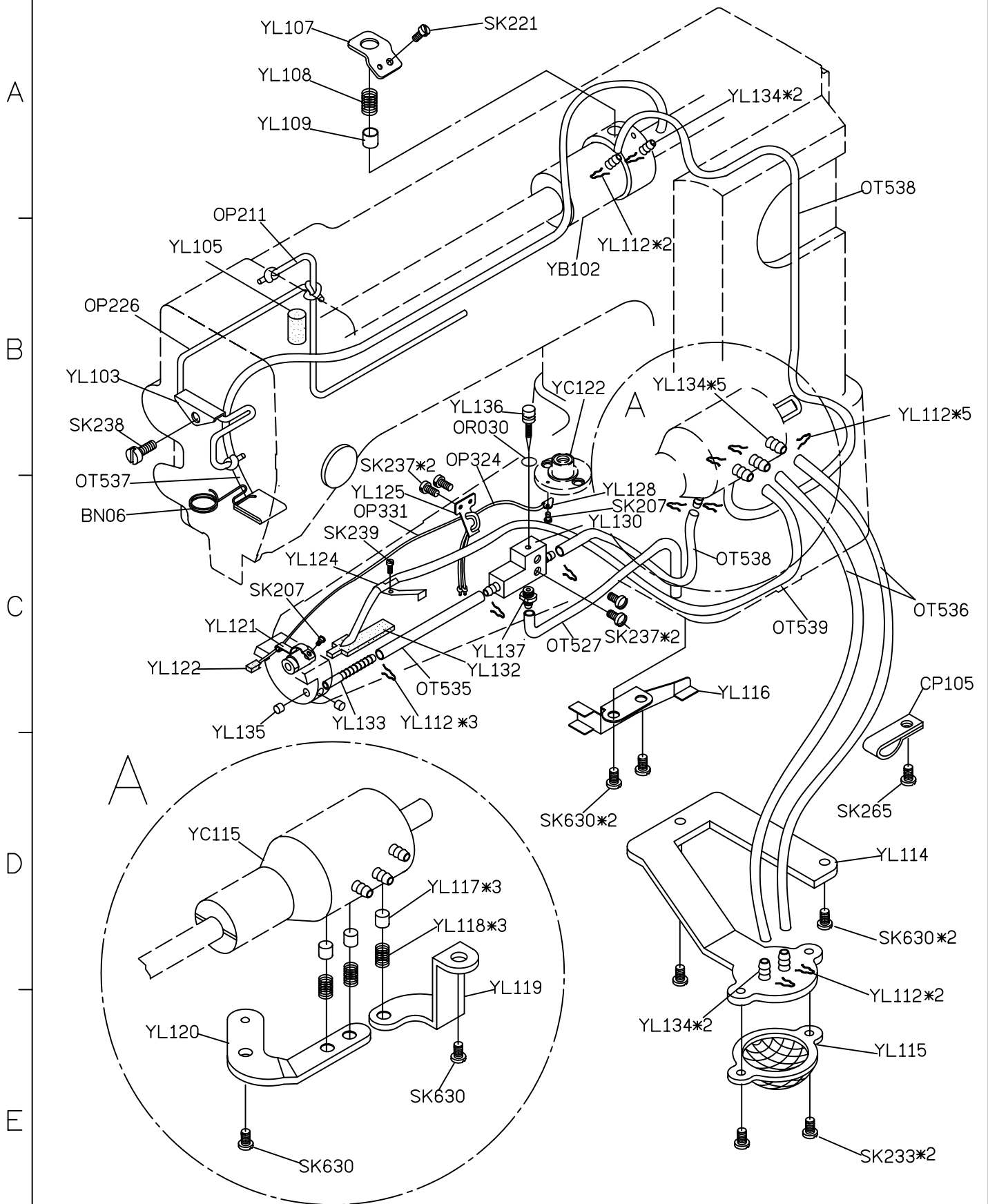
RJ01-A



YJ101-A



PARTS LIST FOR YL GROUP 系列圖 10/14

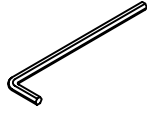


PARTS LIST FOR YM GROUP 系列圖 11/14

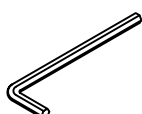
A

MY09
六角扳手

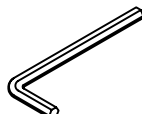
1.5

KY10
六角扳手

2

MY10
六角扳手

2.5

MY11
六角扳手

3

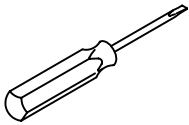
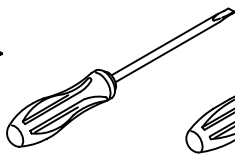
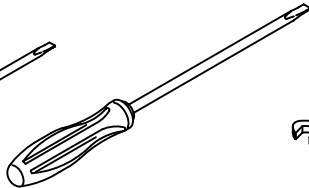
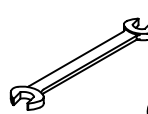
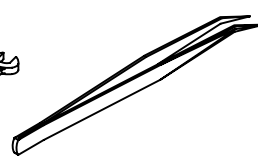
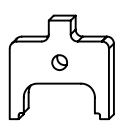
MY12
六角扳手

4

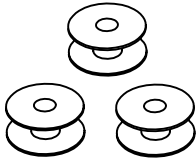
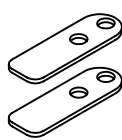
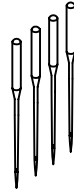
KY11
六角扳手

5

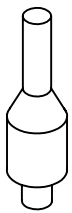
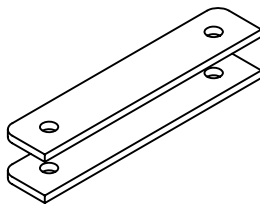
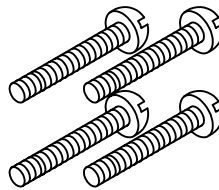
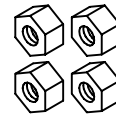
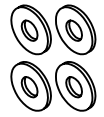
B

MY13
一字扳手KY17
一字扳手KY16
一字扳手BY19
開口扳手KY18
夾子YM11
調整扳手

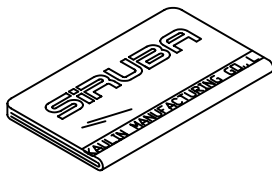
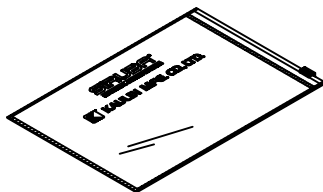
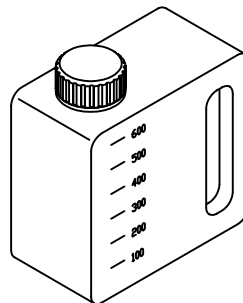
C

G304*3
梭子YC119*2
墊片DP17*4
針KY03
油壺KZ03*1
乾燥劑

D

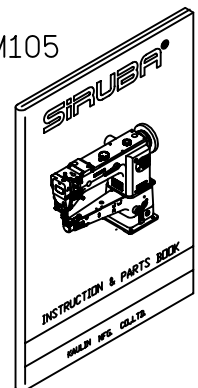
BY503
支撐架YM101*2
橡皮墊片SM8050
螺絲NM810*4
螺帽WM800*8
華司

E

MY01
防塵罩KY26F
配件袋LY21-A
油罐

YM105

使用說明書



PARTS LIST FOR YU GROUP 系列圖 12/14

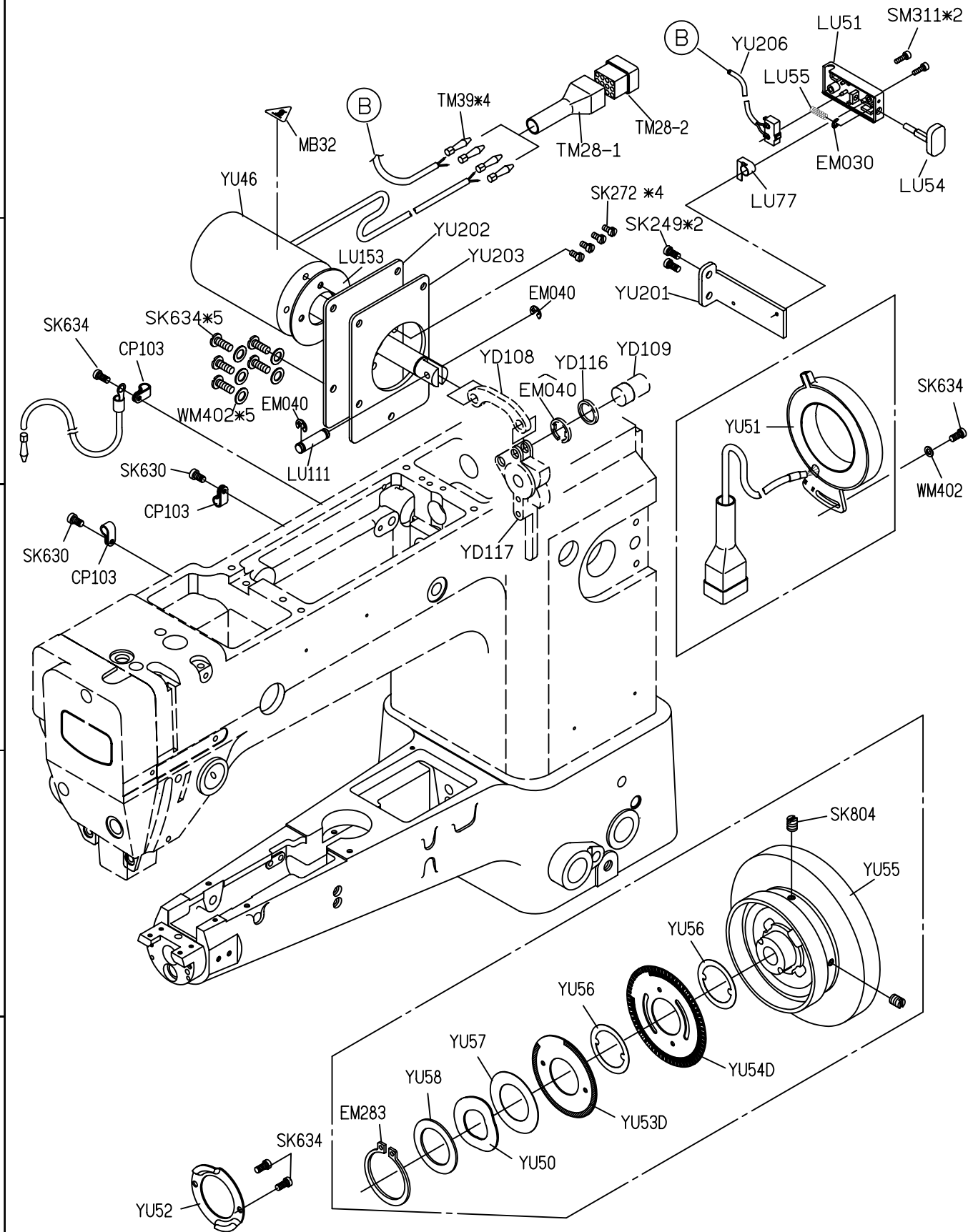
A

B

C

D

E



1

2

3

4

5

91.08.05

PARTS LIST FOR YZ GROUP 系列圖 13/14

A

B

C

D

E

YZ101-3

YZ101-2

YZ102

YZ103

YZ101-1

YC619-A

1

2

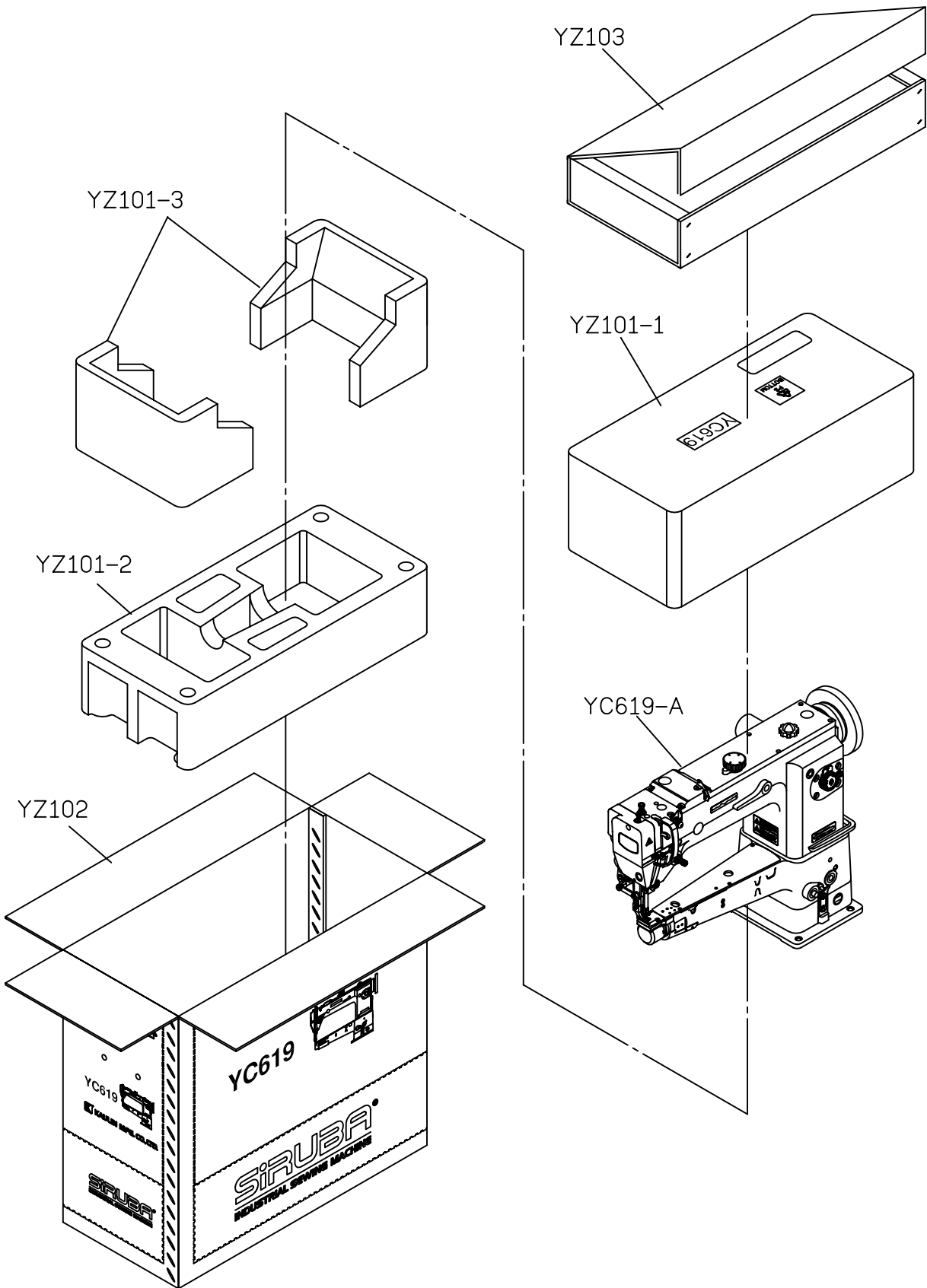
3

4

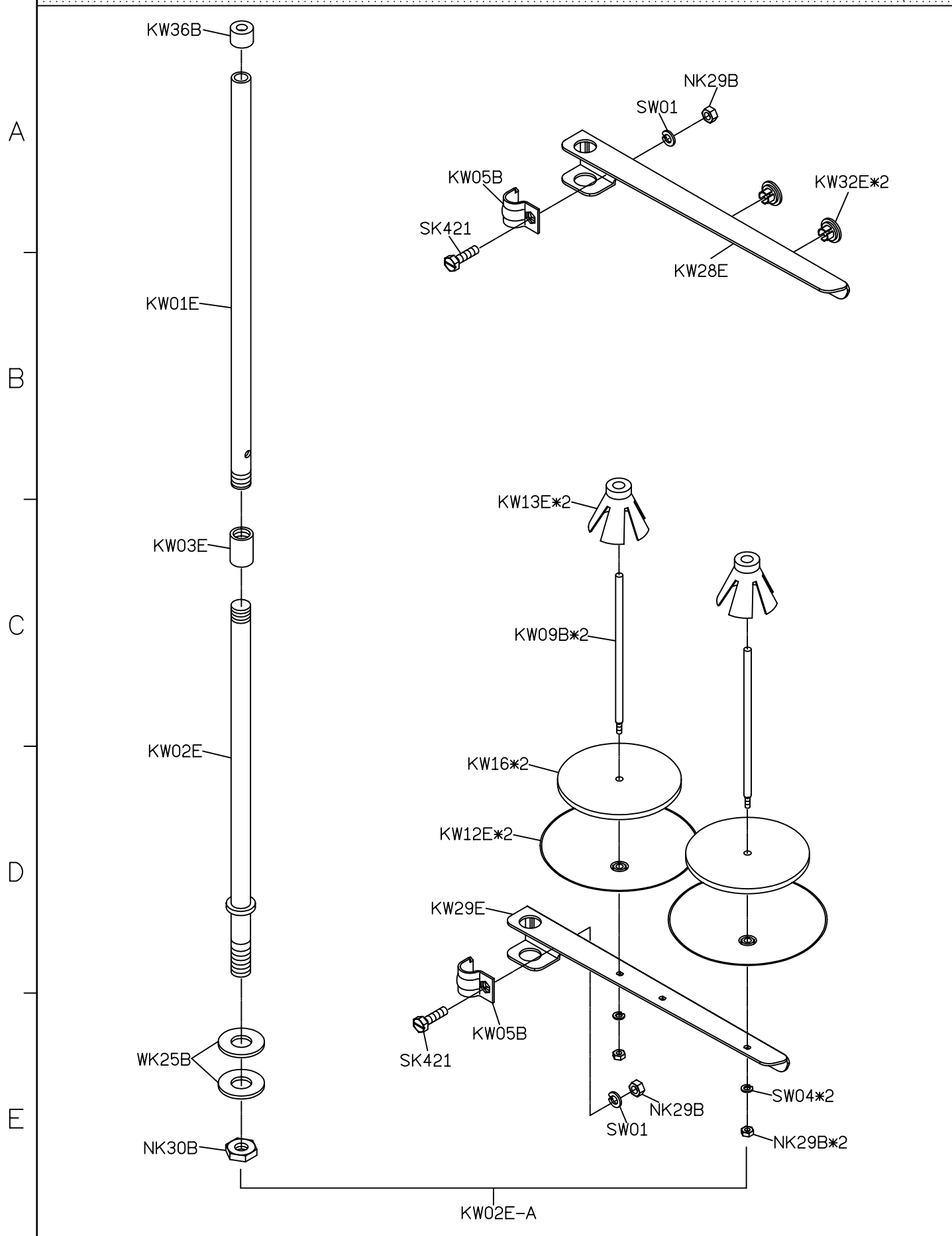
5

FOR YC619

91.07.23



PARTS LIST FOR THREAD STAND GROUP 系列圖 14/14



1

2

3

4

5

93.09.21